

CHELEM

*International trade flows, balances of payments
and world revenues (GDPs)*

A tool to analyse relative national performance



CEPII

CENTRE
D'ÉTUDES PROSPECTIVES
ET D'INFORMATIONS
INTERNATIONALES



BUREAU VAN DIJK

ELECTRONIC PUBLISHING

CHELEM

International trade flows, balances of payments and world revenues (GDPs)

CHELEM is a tool to analyse national economic performance compared to the global economic situation.

The inclusion of a global perspective gives you a more consistent basis for international analysis and a more accurate picture than the comparison of isolated national performances.

CHELEM provides you with integral software that allows you to completely manipulate and analyse the information. You can:

- Sort your results by various data items including country
- Calculate averages, moving averages and totals
- Present your search results in tables and graphs
- Classify your results into deciles and quartiles
- Analyse trends and changes in the figures
- Export all the tables and graphics for use in other packages for presentations and further analysis
- Create your own aggregate figures

What data sources are used to create CHELEM?

The information for **CHELEM** is provided by CEPII, the leading French centre for the study and research of global economics. A public body, CEPII is overseen by the CAS (Conseil d'Analyse Stratégique). In creating **CHELEM**, CEPII uses publications from international bodies such as the World Bank, the IMF, UNO, OECD, EUROSTAT etc.

CHELEM is made up of three databases, or modules, linked by the same division into 82 consistent geographic areas. These three databases help you to identify and analyse the positions of national and interdependent economies, relative to the global economic picture.

The three databases and the information they contain:

CHELEM - International Trade (INT)

This module contains information on the trade of goods broken down into 71 products categories. The breakdown is also available using the GTAP (43 class) or ISIC (147 class) classification.

For each year, and for each of the product categories (CEPII, GTAP or ISIC), the monetary values of the trade between the countries/areas is presented in a unique matrix.

CHELEM - Gross Domestic Product (GDP)

This module contains 5 different macro-economic aggregates with data going back to 1960. The series are available for the 82 pre-set geographic zones and all individual countries.

The variables are as follows:

- Total population (millions of inhabitants)
- An internationally comparable gross domestic product (in USD at current market prices)
- Gross domestic product as inter-temporal volume (at constant market prices, USD 2005)
- Purchasing power parity gross domestic product (at constant market prices, USD 2005)
- Nominal exchange rates

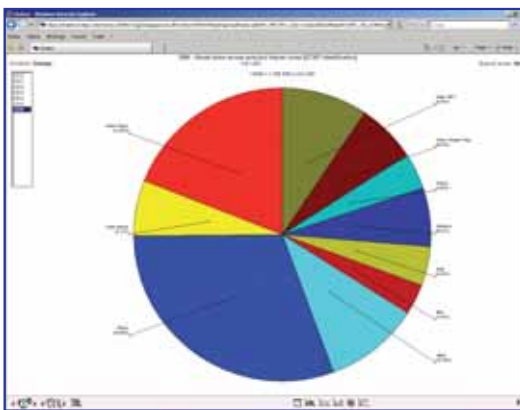
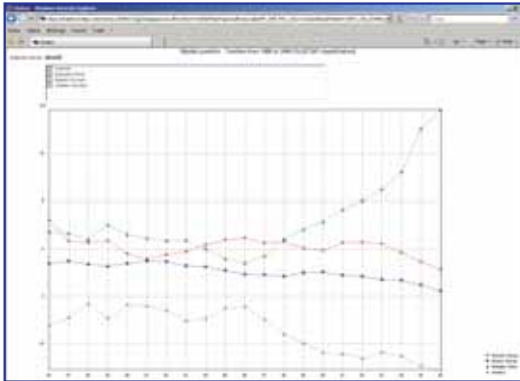
CHELEM - Balance of Payments (BOP)

Balance of payment flows for the geographic zones plus individual countries, including:

- 213 headings covering variables as listed by the IMF
- 7 aggregates
- 4 balances

CHELEM

The benefits of CHELEM include:



Consistent geographic analysis across three data sources

In each of the three modules the data is presented consistently in 82 pre-set geographical areas that reflect the current economic picture and recent geo-political evolutions. This gives a simple, easy-to-use system for searching and analysing the economic information.

Simplified product classifications

The product classifications are arranged in 71 categories. In order to accurately measure the impact of external trade on a country's internal activity, CEPII considers it essential to be able to compare trade and production data. The classifications that have been included allow optimal comparison and minimise series breaks in long-term analyses. Analysis could be performed using the GTAP or ISIC product classifications.

Consistent information

The economists at CEPII look for, and correct, inconsistencies in data between countries. When deciding which figures should be adjusted, judgement is based on the regularity and reliability of each country's reporting history. For example, in the case of an anomaly between two countries' figures, preference would normally be given to the information filed by an OECD country rather than a developing economy.

Despite the complexities of data collection during political change and instability, the information is consistent over a long time period. CEPII continually strives to maintain the quality of its data. The result is a truly consistent information source.

Pre-calculated indicators

CHELEM contains raw data and pre-calculated indicators which combine to save you time whilst providing the most accurate information for your research and analysis. Some of the variables combine information from several databases:

INT database

- Balance of trade
- Import / Export ratio
- Import / Export per head
- Imports / Current GDP
- Exports / Current GDP
- Market position
- Revealed comparative advantages
- Performance indicator
- Structure
- Export share variation

GDP database

- GDP per head
- Real exchange rate
- Purchasing power parity rate

BOP database

- Market position
- Contribution to the current balance of payments

Create your own, user-defined aggregates

Using **CHELEM** you can create your own aggregate figures: for specific countries/zones across the three databases, per product (INT database) or per account in the balance of payments module.



BUREAU VAN DIJK
ELECTRONIC PUBLISHING

Belgium

Avenue Louise 250
1050 Brussels
tel: 32 2 639 06 06
fax: 32 2 648 82 30
brussels@bvdep.com

United Kingdom

10 Northburgh Street
London EC1V 0PP
tel: 44 (0)20 7549 5000
fax: 44 (0)20 7549 5010
london@bvdep.com

France

7 Rue Drouot
75009 Paris
tel: 33 1 53 45 46 00
fax: 33 1 53 45 46 28
paris@bvdep.com

Germany

Hanauer Landstrasse 175-179
60314 Frankfurt
tel: 49 (69) 963 665 0
fax: 49 (69) 963 665 50
frankfurt@bvdep.com

Netherlands

Amsteldijk 166
1079 LH Amsterdam
tel: 31 (0) 20 5400 100
fax: 31 (0) 20 5400 111
amsterdam@bvdep.com

24 Great King Street
Edinburgh EH3 6QN
tel: 44 (0)131 200 7110
fax: 44 (0)131 200 7120
edinburgh@bvdep.com

Spain

Palacio de Miraflores
Carrera de San Jerónimo
15 - 2º Planta
28014 Madrid
tel: 34 (91) 454 70 98
fax: 34 (91) 454 70 01
madrid@bvdep.com

Switzerland

Rue Charles-Sturm 20
1206 Geneva
tel: 41 22 830 05 44
fax: 41 22 346 11 51
geneva@bvdep.com

Slovak Republic

Kutlikova 17
852 50 Bratislava
tel: 421 2 682 86 760
fax: 421 2 682 86 763
bratislava@bvdep.com

Brook House
64-72 Spring Gardens
Manchester
M2 2QB
tel: 44 (0)161 234 6880
fax: 44 (0)161 234 6889
manchester@bvdep.com

Portugal

Rua da Misericórdia 76 - 2º
1200-273 Lisbon
tel: 351 21 321 01 55
fax: 351 21 321 02 99
lisbon@bvdep.com

Denmark

Ny Oestergade 12
1101 Copenhagen K
tel: 45 33 4545 20
fax: 45 33 4545 30
copenhagen@bvdep.com

United States

NY Information Technology Center
55 Broad Street, 14th Floor
New York, NY 10004
tel: 1 (212) 797 3550
fax: 1 (212) 797 3555
newyork@bvdep.com

Italy

Via Zenale 15
20123 Milan
tel: 39 (02) 43 98 22 77
fax: 39 (02) 48 01 68 12
milan@bvdep.com

Austria

Clemens-Holzmeister-Strasse 4
1100 Vienna
tel: 43 (1) 606 11 96
fax: 43 (1) 606 11 96 50
vienna@bvdep.com

Sweden

Vasagatan 11
111 20 Stockholm
tel: 46 8 692 65 12
fax: 46 9 692 65 01
stockholm@bvdep.com

100 Bush Street, 1600
San Francisco, CA 94104
tel: 1 (415) 773 1107
fax: 1 (415) 773 1269
sanfrancisco@bvdep.com

Via Savoia 78
00198 Rome
tel: 39 (06) 85 23 72 28
fax: 39 (06) 85 35 01 87
rome@bvdep.com

Japan

9F Landic No.3, Shinbashi
2-12-1 Shinbashi
Minato-ku
Tokyo 105-0004
tel: 813 3580 0561
fax: 813 3580 0562
tokyo@bvdep.com

Singapore

260 Tanjong Pagar Road
OCBC Building
Singapore 088542
tel: 65 6496 9000
fax: 65 6496 9001
singapore@bvdep.com

55 West Monroe, 2340
Chicago, IL 60603
tel: 1 (312) 235-2515
fax: 1 (312) 551-9510
chicago@bvdep.com

Russian Federation
Chernyshevskogo pereulok 5, st. 2
127473 Moscow
tel: 7 495 739 5712
fax: 7 495 739 5712
moscow@bvdep.com

China

12-07 Tower C1 Oriental Plaza
1 East Chang An Avenue
Dong Cheng District
Beijing 100738
tel: 86 10 8515 2255
fax: 86 10 8515 2266
beijing@bvdep.com

Australia

Level 26, 44 Market Street
Sydney, NSW 2000
tel: 61 (2) 9089 8647
fax: 61 (2) 9089 8989
sydney@bvdep.com

Mexico

Guillermo Gonzalez Camarena No.
1450
Del. Alvaro Obregon, Mexico,
D.F. 01210
tel: 5255 1105 0082
fax: 5255 1105 0503
mexico@bvdep.com

Bahrain

Al Jasrah Tower
Diplomatic Area
PO Box 3214, Manama
tel: 973 17 570 406
fax: 973 17 532 259
bahrain@bvdep.com

Level 20, The Center
989 Changle Road
Shanghai 200031
tel: 86 21 5117 5898
fax: 86 21 5116 6899
shanghai@bvdep.com

Korea

21F Seoul Finance Center
84 Taepyungro 1GA
Jung-Gu, Seoul 100-768
tel: 82 2 3782 4833
fax: 82 2 3782 4555
seoul@bvdep.com