

秦

中国企业财务信息分析库



QIN

Chinese company information in an instant

Information on 300,000 listed and
unlisted companies in mainland China



中国出口信用保险公司
China Export & Credit Insurance Corporation



BUREAU VAN DIJK
ELECTRONIC PUBLISHING

QIN Chinese company information in an instant

QIN contains high quality company information and financials from Sinasure, a leading credit insurer and expert on the Chinese business environment. Information for listed companies is provided by World'Vest Base. The data is combined with the latest software from Bureau van Dijk Electronic Publishing (BvDEP) after extensive collaboration with customers on its usability. The software makes it simple to manipulate the data and helps you create searches to identify groups of companies and generate graphs and tables for analysis. Both the software and reports are in English and Chinese.

What type of information does QIN contain?

QIN contains balance sheet and profit and loss account information on over 300,000 companies in mainland China. The financial information is given in both a standardised layout and a local "as reported" format. The standardised report is consistent with the reports used across BvDEP's product range so you can compare companies globally. QIN also gives you access to complementary information such as detailed ownership structures, stock data, market research and news.

How can the software help me?

QIN incorporates BvDEP's new generation software which combines all the functionality BvDEP is renowned for with a sleek presentation. Intuitive yet sophisticated it allows you to create in-depth analyses on both individual and groups of companies. The integral graphics help you interpret the data more easily and the flexible search software means you can screen the database to find companies that match very specific sets of criteria.

The reports and the information they contain:

You can create your own customised reports, view report sections independently and access default summary and peer reports. A full report typically contains the following with up to ten years of information:

- Contact details
- Date of incorporation
- Status, company type and account information
- Activity information including business description and various activity codes
- Number of employees
- Financial data in two formats
 - Chinese format comprising 69 balance sheet and 17 profit and loss account items
 - Global format used across BvDEP's products with 23 balance sheet and 16 profit and loss account items
- 19 ratios
- Management
- Stock data is provided for listed companies and includes weekly, monthly and daily pricing series, stock valuations, stock data and security and price information.

The reports are illustrated with integral graphs that can be customised to illustrate your choice of variable.

Detailed backgrounds*

QIN contains exclusive overviews of the largest companies and contains information such as history, main and secondary activities, strategy and brand names.

Ownership

Supplemented by BvDEP's own research from websites, stock exchanges, direct contact with companies and M&A tracking, the ownership information is extremely detailed. It looks at both shareholders and subsidiaries - shareholders can be either individuals or companies. Direct and indirect ownership is shown and can be tracked back to the ultimate owner. Each company's degree of independence with regard to its shareholders is identified. The ownership information is archived so it can be viewed over time or at a given point.

News*

Up to the minute news stories archived for two years, sourced from multiple major news providers with software to customise searches and alerts.

Peer report

Integral reports compare your subject group to an automatically generated peer group for instant comparables. You can also create your own peer groups, reports and analyses.

How can I access the data on QIN?

QIN is available on an annual subscription and via pay per view credits for less frequent users. The data is also available via two other BvDEP products:

- ORBIS contains information on companies worldwide
- ORIANA has information on companies in the Asia-Pacific region. It includes the Chinese companies that comply with its size criteria

**Part of QIN's ongoing development*

Working with the information

Searching

The software on QIN is very flexible and simple to use. Using QIN you can search across the database using your own combination of hundreds of criteria. The software makes it easy for you to create advanced searches using Boolean logic (and not, or). You can also create times series searching to identify companies that have a consistent value over a time period or search for changes in value and growth trends.

Analysis

You can create advanced analyses, prompted by the software, and display your results in tables or graphs. You can look at an individual company in depth and over time, or you can compare company performances against each other. You can also research industry trends by looking at groups of companies as a whole and determining any correlation between factors, or segment whole regions or industries to understand them better.

Dynamic links

All the subsidiary and holding company reports are dynamically linked so you can move between them instantly. The structure of an organisation can be illustrated in a dynamic tree diagram which you can navigate and create further trees from.

Customised

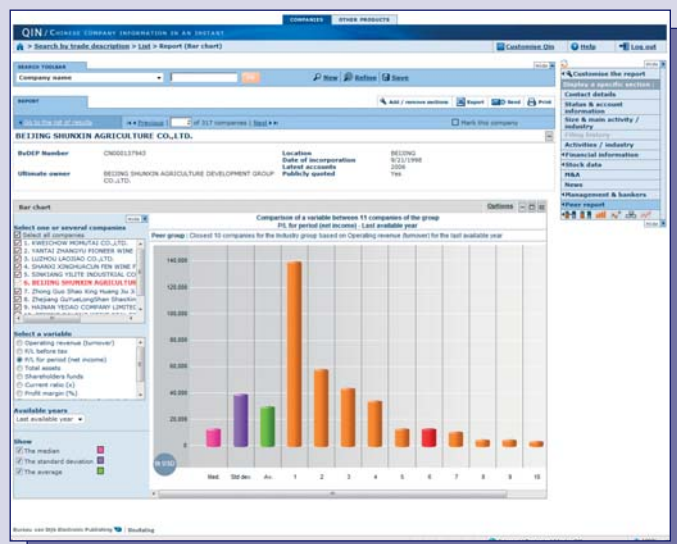
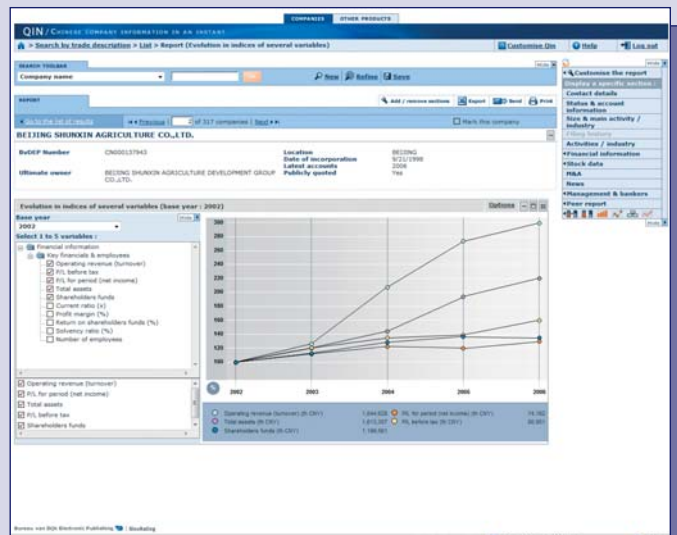
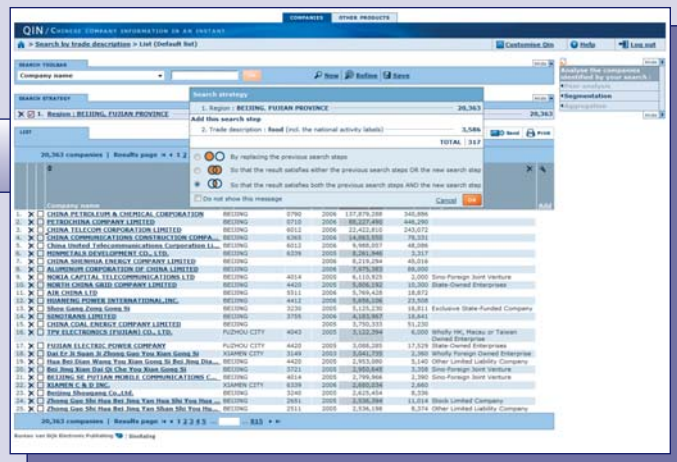
QIN provides lots of opportunities for you to create customised analyses. From creating your own content for reports and lists to briefing our customisation team to integrate QIN with your own in-house CRM systems or scoring methodology, QIN can be tailored to suit.

Alerts

QIN has an advanced alert system where you can set up your own set of alert requests. You can be emailed changes to individual companies, or monitor a group of companies that comply with your chosen criteria. You can also be alerted if your companies are involved in M&A speculation or other deal news.

Exporting

The results of your searches can be quickly exported into all popular formats - in detail or as lists, completely customised to your requirements. You can also include graphs in your presentations.



QIN can benefit many areas of your research and development:

The benefits of QIN include:

Data quality

Sinosure is a very well-respected expert in Chinese company data. QIN is updated monthly and the companies linked with data provided from other sources, such as news and ownership.

Flexible and easy to use

The software on QIN has been developed after years of liaison with customers. It provides both a sophisticated analysis platform with intuitive screens. The access to QIN is flexible - you can combine pay per view and unlimited access options across our portfolio of products. Users of ORBIS and ORIANA also have access to data from QIN.

Supported

QIN is supported by BvDEP's offices around the world who offer helpline assistance and training programmes. BvDEP's post sale customer support has received a major award in recognition of its excellence.

Applications for QIN

QIN for credit analysis

- Analyse companies and peer groups in detail
- Be informed of changes in your chosen companies using the alerts
- Identify target companies using precise user-defined variables
- Compare individual companies to their peer groups

QIN for corporate finance and mergers & acquisitions

- Identify targets for acquisitions or joint venture (M&A)
- Compare the performance of a target company against its peer group using accurate peer group analysis

QIN for tax, audit and transfer pricing

- Identify, short-list and benchmark comparable companies

QIN for market research

- Identify peer groups for benchmarking and analysis
- Use for detailed industry analysis
- Analyse trends and markers

QIN for competitive intelligence

- Identify peer groups efficiently
- Create graphical comparisons that can be included in reports

QIN for strategic planning

- Analyse industries and markets

QIN for business development

- Research potential markets
- Identify companies precisely by industry groups, size and/or other financial criteria
- Create sales territories/markets on a more accurate basis

QIN for procurement

- Identify companies by activity and/or location
- Segment data for financial breakdown by activity
- Keep track of suppliers and understand their ownership structures

QIN in an academic environment

- Search and manipulate information easily
- Suitable for student and teacher research projects
- Ideal as a tool for teaching accounting practices

Belgium

Avenue Louise 250
1050 Brussels
tel: 32 2 639 06 06
fax: 32 2 648 82 30
brussels@bvdep.com

Netherlands

Amsteldijk 166
1079 LH Amsterdam
tel: 31 (0) 20 5400 100
fax: 31 (0) 20 5400 111
amsterdam@bvdep.com

Slovak Republic

Kutlikova 17
852 50 Bratislava
tel: 421 2 682 86 760
fax: 421 2 682 86 763
bratislava@bvdep.com

United States

NY Information Technology Center
55 Broad Street, 14th Floor
New York, NY 10004
tel: 1 (212) 797 3550
fax: 1 (212) 797 3555
newyork@bvdep.com

100 Bush Street, 1600
San Francisco, CA 94104
tel: 1 (415) 773 1107
fax: 1 (415) 773 1269
sanfrancisco@bvdep.com

55 West Monroe, 2340
Chicago, IL 60603
tel: 1 (312) 235-2515
fax: 1 (312) 551-9510
chicago@bvdep.com

United Kingdom

10 Northburgh Street
London EC1V 0PP
tel: 44 (0)20 7549 5000
fax: 44 (0)20 7549 5010
london@bvdep.com

24 Great King Street
Edinburgh EH3 6QN

tel: 44 (0)131 200 7110
fax: 44 (0)131 200 7120
edinburgh@bvdep.com

Italy

Via Zenale 15
20123 Milan
tel: 39 (02) 43 98 22 77
fax: 39 (02) 48 01 68 12
milan@bvdep.com

Via Savoia 78

00198 Rome
tel: 39 (06) 85 23 72 28
fax: 39 (06) 85 35 01 87
rome@bvdep.com

Russian Federation

Chernyshevskogo pereulok 5, st. 2
127473 Moscow
tel: 7 495 739 5712
fax: 7 495 739 5712
moscow@bvdep.com

Bahrain

Al Jasrah Tower
Diplomatic Area
PO Box 3214, Manama
tel: 973 17 570 406
fax: 973 17 532 259
bahrain@bvdep.com

France

7 Rue Drouot
75009 Paris
tel: 33 1 53 45 46 00
fax: 33 1 53 45 46 28
paris@bvdep.com

Spain

Palacio de Miraflores
Carrera de San Jerónimo
15 - 2º Planta
28014 Madrid
tel: 34 (91) 454 70 98
fax: 34 (91) 454 70 01
madrid@bvdep.com

Portugal

Rua da Misericórdia 76 - 2º
1200-273 Lisbon
tel: 351 21 321 01 55
fax: 351 21 321 02 99
lisbon@bvdep.com

Austria

Clemens-Holzmeister-Strasse 4
1100 Vienna
tel: 43 (1) 606 11 96
fax: 43 (1) 606 11 96 50
vienna@bvdep.com

Japan

9F Landic No.3, Shinbashi
2-12-1 Shinbashi
Minato-ku
Tokyo 105-0004
tel: 813 3580 0561
fax: 813 3580 0562
tokyo@bvdep.com

China

12-07 Tower C1 Oriental Plaza
1 East Chang An Avenue
Dong Cheng District
Beijing 100738
tel: 86 10 8515 2255
fax: 86 10 8515 2266
beijing@bvdep.com

Level 20, The Center
989 Changle Road
Shanghai 200031
tel: 86 21 5117 5898
fax: 86 21 5116 6899
shanghai@bvdep.com

Germany

Hanauer Landstrasse 175-179
60314 Frankfurt
tel: 49 (69) 963 665 0
fax: 49 (69) 963 665 50
frankfurt@bvdep.com

Switzerland

Rue Charles-Sturm 20
1206 Geneva
tel: 41 22 830 05 44
fax: 41 22 346 11 51
geneva@bvdep.com

Denmark

Ny Oestergade 12
1101 Copenhagen K
tel: 45 33 4545 20
fax: 45 33 4545 30
copenhagen@bvdep.com

Sweden

Vasagatan 11
111 20 Stockholm
tel: 46 8 692 65 12
fax: 46 9 692 65 01
stockholm@bvdep.com

Singapore

2 Havelock Road
05-09 Apollo Centre
Singapore 059763
tel: 65 6496 9000
fax: 65 6325 1235
singapore@bvdep.com

Australia

Level 26, 44 Market Street
Sydney, NSW 2000
tel: 61 (2) 9089 8647
fax: 61 (2) 9089 8989
sydney@bvdep.com

Korea

21F Seoul Finance Center
84 Taepyungro 1GA
Jung-Gu, Seoul 100-768
tel: 82 2 3782 4833
fax: 82 2 3782 4555
seoul@bvdep.com